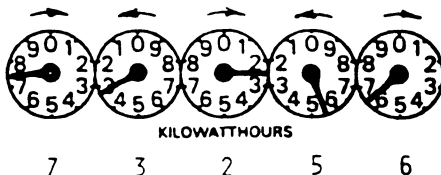


READ YOUR ELECTRIC METER

SIMPLY WRITE DOWN THE NUMBER THE HAND HAS PASSED

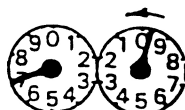
Notice that some hands turn right and some turn left.



If a hand is directly on a number, you may be uncertain whether to write down that number or the next lower.

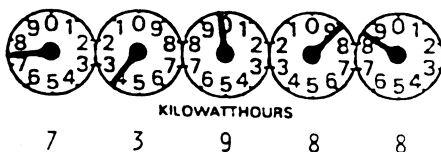


If the hand on the right has passed 0, write down the number the hand on the left is pointing to. In this case it is a 7.



If the hand on the right has not passed 0, write down the next lower number. In this case it is a 6.

Now look at this tougher reading



From this new reading _____ 73988

Subtract the last reading _____ 73256

Your usage is _____ 732 KWh

Remember...



(100 Watts + 100 Watts) X 5 hours = 1000 Watt-hours = 1 kilowatt-hour



100 + 100 + 100 + 100 + 100 + 100 + 100 + 100 + 100 + 100
Watts

for 1 hour = 1 kilowatt-hour